



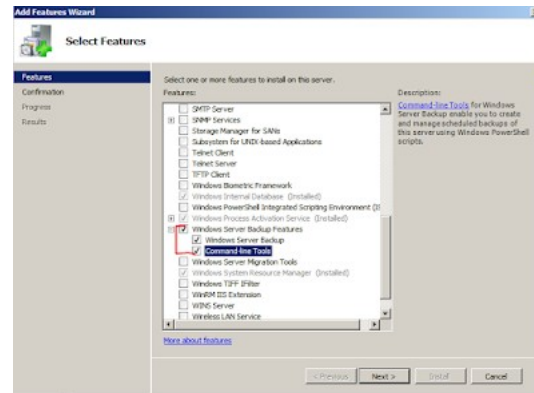
Windows 2008 Serwer - Backup Windows 2008 Server (70-646) cz.13

Jak to mówią twardziele nie robią backupów, mhh do czasu..)

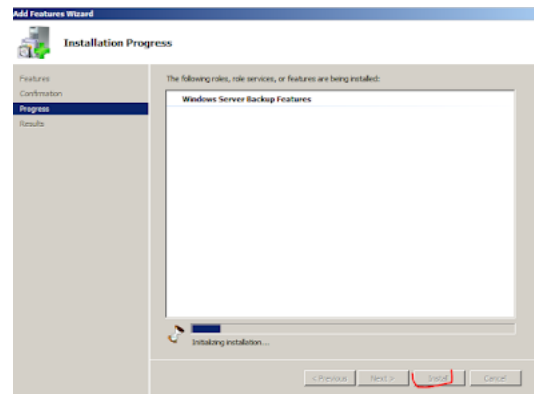
Potrzebny będzie Windows 2008 z 2 dyskami. Na jednym system na drugim będziemy zapisywać backupy - rozmiar około 60GB.

1. Wykonanie backupu systemu przy pomocy wbudowanego narzędzia Windows Server Backup.

Na Server01 dodamy Windows Server Features backup.



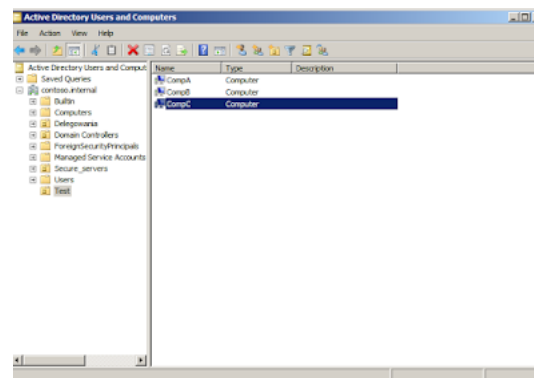
Instalujemy.



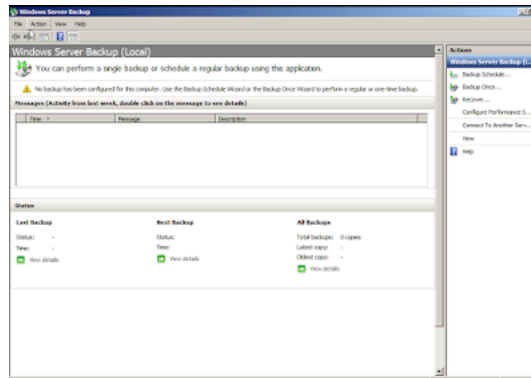
Otwórzmy AD Computers and Users.

Utwórzmy OU o nazwie Test.

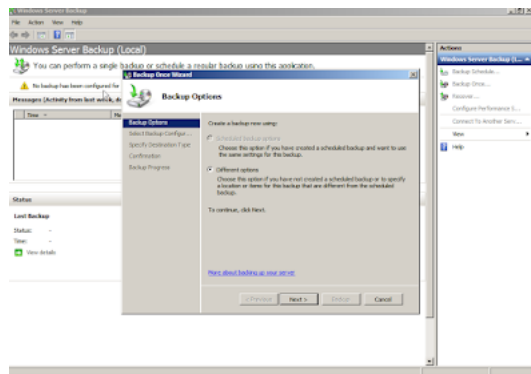
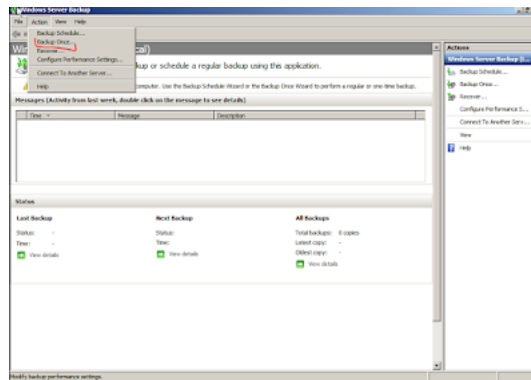
W niej nazwy 3 komputerów CompA,CompB,CompC.



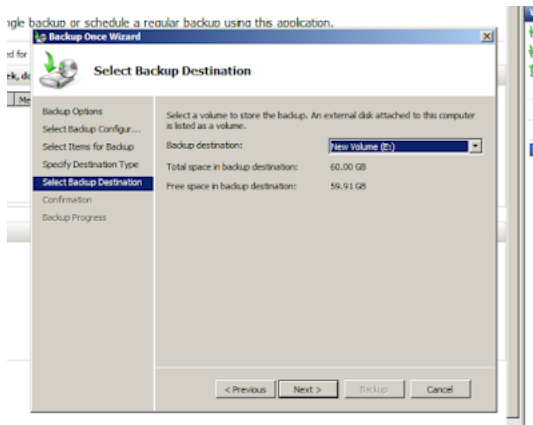
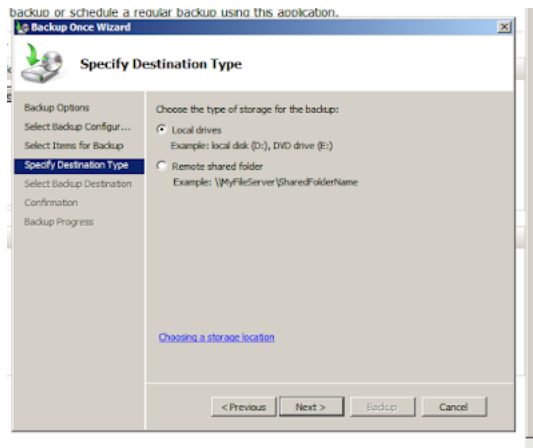
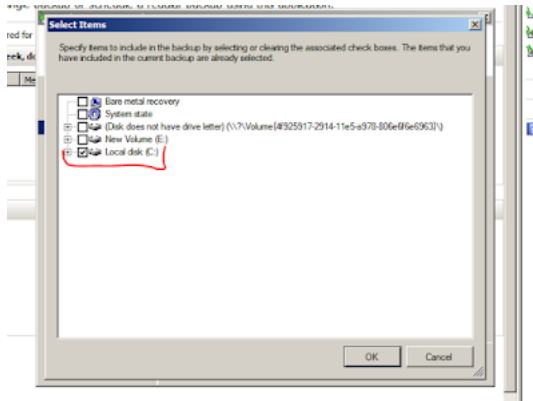
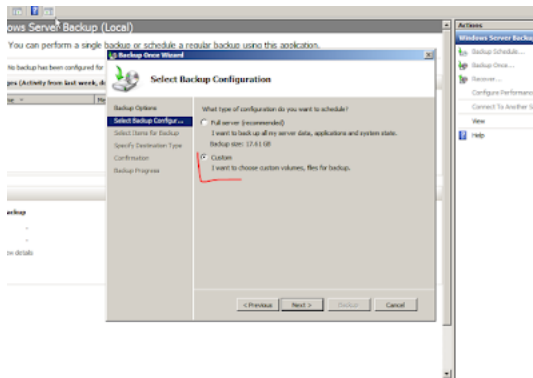
Otwieramy narzędzie do backupu -Windows Server Backup.

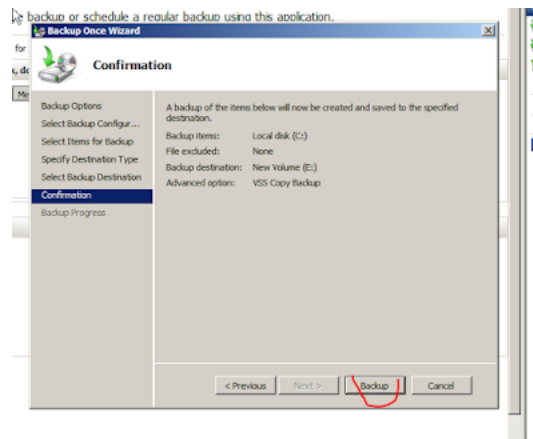


Wybieramy z Action -> Backup Once.



Wybieramy co chcemy backup'owac.

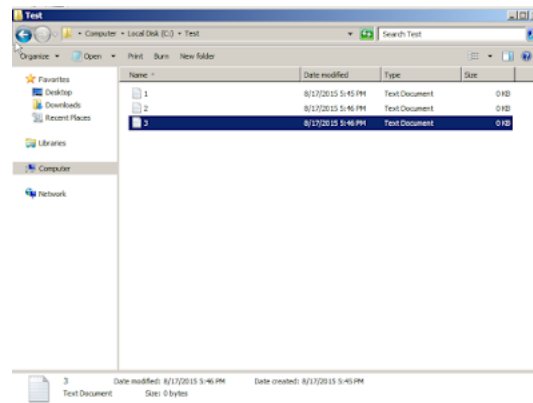




2. Backup stanu systemu.

Na Server01 utworzymy katalog C:\Test.

W nim 3 pliki testowe: 1.txt, 2.txt, 3.txt.



Otwieramy cmd jako Administrator.

Wpisujemy: `wbadmin start backup -backuptarget:e: -include:c: -vssFull -quiet`
Backuptarget:e: literka e u mnie druga partycja na dysku.

W wyniku otrzymamy:

```

Administrator: Command Prompt
C:\Users\Administrator>wbadmin start backup -backuptarget:e -include:c: -vssFull -quiet
wbadmin 1.0 - Backup command-line tool
(C) Copyright 2004 Microsoft Corp.

Retrieving volume information...
This will back up volume Local Disk(C:) to e:.
Note: The list of volumes included for backup does not include all the volumes that contain operating system components. This backup cannot be used to perform a system recovery. However, you can recover other items if the destination media type supports it.

The backup operation to E: is starting.
Creating a shadow copy of the volumes specified for backup...
Creating a backup of volume Local Disk(C:), copied <1%>.
Creating a backup of volume Local Disk(C:), copied <3%>.
Creating a backup of volume Local Disk(C:), copied <5%>.
Creating a backup of volume Local Disk(C:), copied <7%>.
Creating a backup of volume Local Disk(C:), copied <9%>.
Creating a backup of volume Local Disk(C:), copied <11%>.
Creating a backup of volume Local Disk(C:), copied <12%>.
Creating a backup of volume Local Disk(C:), copied <14%>.
Creating a backup of volume Local Disk(C:), copied <16%>.
Creating a backup of volume Local Disk(C:), copied <18%>.
Creating a backup of volume Local Disk(C:), copied <20%>.
Creating a backup of volume Local Disk(C:), copied <22%>.
Creating a backup of volume Local Disk(C:), copied <24%>.
Creating a backup of volume Local Disk(C:), copied <26%>.
Creating a backup of volume Local Disk(C:), copied <28%>.
Creating a backup of volume Local Disk(C:), copied <30%>.
Creating a backup of volume Local Disk(C:), copied <32%>.
Creating a backup of volume Local Disk(C:), copied <34%>.
Creating a backup of volume Local Disk(C:), copied <36%>.
Creating a backup of volume Local Disk(C:), copied <38%>.
Creating a backup of volume Local Disk(C:), copied <40%>.
Creating a backup of volume Local Disk(C:), copied <42%>.
Creating a backup of volume Local Disk(C:), copied <44%>.
Creating a backup of volume Local Disk(C:), copied <46%>.
Creating a backup of volume Local Disk(C:), copied <48%>.
Creating a backup of volume Local Disk(C:), copied <50%>.
Creating a backup of volume Local Disk(C:), copied <52%>.
Creating a backup of volume Local Disk(C:), copied <54%>.
Creating a backup of volume Local Disk(C:), copied <56%>.
Creating a backup of volume Local Disk(C:), copied <58%>.
Creating a backup of volume Local Disk(C:), copied <60%>.

```

Usuwamy pliki z Test na C:\

Wykonujemy polecenie: wbadmin start systemstatebackup -backuptarget:e -quiet

```

Administrator: Command Prompt - wbadmin start systemstatebackup -backuptarget:e -quiet
C:\Users\Administrator>wbadmin start systemstatebackup -backuptarget:e -quiet
wbadmin 1.0 - Backup command-line tool
(C) Copyright 2004 Microsoft Corp.

Starting to back up the system state [8/17/2015 6:16 PM]...
Retrieving volume information...
This will back up the system state from volume(s) <Unlabeled Volume> (1.46 GB)\
\Volume{4F925917-2914-11e5-a978-806e6f6e6963}\, Local Disk(C:) to e:.
Creating a shadow copy of the volumes specified for backup...
Creating a shadow copy of the volumes specified for backup...

```

Sprawdzamy czy ma 3 kopie bezpieczeństwa.

wbadmin get versions

```

Administrator: Command Prompt
C:\Users\Administrator>wbadmin get versions
wbadmin 1.0 - Backup command-line tool
(C) Copyright 2004 Microsoft Corp.

Backup time: 8/16/2015 9:58 PM
Backup target: 1294/USB Disk labeled New Volume(E:)
Version identifier: 08/17/2015-04158
Can recover: Volume(s), File(s), Application(s)
Snapshot ID: {42ab6adf-8e93-4fac-ab04-223c4f938dc3}

Backup time: 8/17/2015 5:58 PM
Backup target: 1294/USB Disk labeled New Volume(E:)
Version identifier: 08/18/2015-08158
Can recover: Volume(s), File(s), Application(s)
Snapshot ID: {d7ba3a61-9fa0-4e0b-9a5b-b998bb30e6ab}

Backup time: 8/17/2015 6:49 PM
Backup target: 1294/USB Disk labeled E:
Version identifier: 08/18/2015-01149
Can recover: Volume(s), File(s), Application(s), System State
Snapshot ID: {8e049808-4acc-48f6-a2c0-c688ba20c1e}

C:\Users\Administrator>

```